

Viimeisin kampanjatiedotteemme on ilmestynyt 10.6.19, kts tarkemmat tiedot **KAMPANJA**-linkistä!

**SOFTA SUPERSTORE**  
WWW.SOFTASUPERSTORE.COM  
WWW.OHJELMISTOT.FI  
28.07.2019 • v33 • 19:08

Asiakaspalvelu  
ark. 10.30 - 16  
09 - 3424 370

TUOTEHAKU

[Tarkennettu haku](#)

TUOTERYHMÄT

HAE

-- Valitse --



Powered by  
DataCenter Finland Oy

KIRJAUDU

OSTOSKORI

## PÄÄVALIKKO

ETUSIVU  
YRITYSTIEDOT  
TUOTEPERHEET  
TUOTERYHMÄT  
SUPERHAKU  
LISENSSIT  
KAMPANJA  
UUTUUDET  
SUPERTARJOUKSET  
SOFTABASAARI  
SOFTAINFOA  
Softautiset.  
Käytetyt lyhenteet.  
Tuote-esittelyjä.  
Juridiikka.  
Tietoturvaongelmien ratkaisuja.  
Ohjelmistovalmistajien tukea.  
Käyttäjäfoorumeja.  
Hyödyllisiä apuohjelmia.  
Softademo-linkkejä.  
Lehdistölinkkejä.  
Lehdistötiedotteita.  
Seminaarikutsuja.  
Asennusapua  
Kaikenkattavat IT-palvelut  
Muuta mielenkiintoista.  
Vendors only!  
Omat kotisivut  
TILAUSOHJEET  
POSTITUSLISTA  
REKISTERÖINTI  
PIKAHINNASTO  
TARJOUSPYYNTÖ  
PALAUTE  
ATK-KAAPELIT  
ATK-KIRJAT  
ATK-LEHDET

## ACD Systems ACDSee Photo Editor 6



ACD Systems is one of the largest and most respected independent digital image editing and management companies in the world. The company was founded in 1993 in Texas by technology and imaging visionary Doug Vandekerkhove. Doug foresaw the importance of the convergence of analog and digital (print, photos, scans, video and metadata) in the 80's, revolutionizing how analog and digital information was used in pre-Web applications. Today ACD holds seven patents, and millions of ACDSee products are in use throughout the world.

ACD Systems has offices in the United States and Canada, supported by a team of global channel partners. With a product family that includes ACDSee Pro 6, ACDSee Pro 2 (Mac), ACDSee 16 photo editing and management solutions, and Canvas technical illustration software, the company serves millions of consumers, small and medium sized businesses, government agencies and educational institutions, and corporate customers.

Representative markets for ACD Systems' products include AEC (architecture, engineering and construction), insurance, manufacturing, aerospace, automotive, government, architecture/construction, education, gaming, technology, bio/health and oil/gas/energy. Customers include General Motors, Caterpillar, Boeing, The New York City Fire Department, NASA, CNN and the Royal Canadian Mounted Police. ACDSee software was used in the making of the movie Titanic because the filmmakers recognized that only ACDSee could provide the illustration, editing and management tools required for their large scale, complex development tasks and image management requirements.



### Turn any shot into your best shot.

Discover your inner photo editing genius. ACDSee Photo Editor 6 makes it easy to create the photos you've always envisioned. Apply stunning effects and filters, work with object layers effortlessly, quickly correct common photo flaws, and make



advanced edits like a pro. With ACDSee Photo Editor 6, you have the power to transform any shot into your most extraordinary one yet.

## What's New

Ideal as a companion to ACDSee or ACDSee Pro, or used on its own, Photo Editor 6 packs plenty of power. Correct lighting issues, fine-tune color, transform your shots with artistic effects, and combine various elements with the freedom to customize any detail you wish.

### Harness the power of LCE

Take control of the brightness and contrast in your photos with the Advanced Lighting tool, powered by ACDSee's patented LCE (Lighting and Contrast Enhancement) technology. Use the Brightening and Darkening sliders for precise edits, or adjust the internal curves by clicking and dragging directly on your photo. For a professional polish, you can also adjust the contrast, or add fill light to lighten dark areas.



### Fix lighting. Lightning fast.

Quickly and easily rescue photos that are too light or too dark. Instantly lighten shadows and reduce highlights in one click, adjust individual sliders to fine-tune shadows, midtones and highlights, or click directly on light and dark spots for instantly improved photos.



### Colors for any wavelength

Enhance hues, or change individual colors to completely transform an image. Subtly or dramatically change the saturation, brightness and hue using sliders, or click directly on precise color ranges in your photo for arresting results.



### New mood-altering effects

Transform the mood and atmosphere of your photos in a click, thanks to a bevy of Instagram-inspired artistic effects. Apply the Collage effect to creatively display your photo in a photomontage of prints; Lomo for an edgy, retro feel; Granite for an etched-in-stone look; and Orton to give an ethereal, pastel-like touch to your portraits and landscapes.

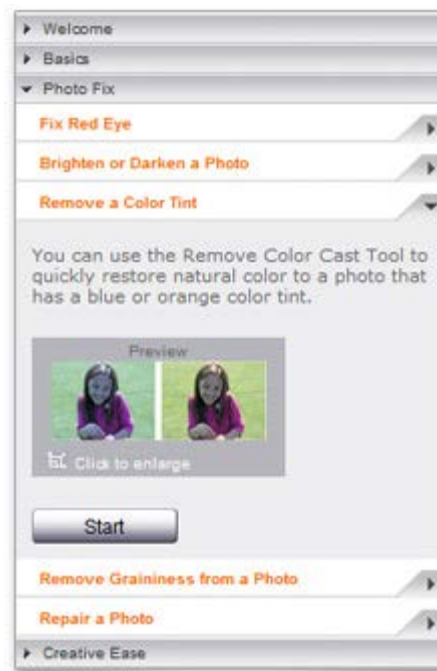




## RAW Inspiring

Photo Editor 6 supports the latest RAW formats from the most popular camera models, so you can use your high-resolution RAW files as objects in your photo layouts. Non-destructively adjust color, apply effects, correct lighting issues, and more.

## Features



## Jump in

You don't have to be a technical whiz to start editing your photos like a pro. How-to lessons take you step by step through common editing tasks, giving you the confidence to explore your creativity. You'll spend less time learning so you can get to the task at hand faster: transforming your photos into something breathtaking.

## Object Layers

Photo Editor's work area provides a canvas where you can arrange your photos, text, and other objects, like shapes and lines. Layer your objects, group them, change their order, and experiment with opacity and blend modes to create amazing photo layouts. Selectively adjust any object, or apply changes to the entire layout. Your originals are

always safely preserved.

## Layouts Made Easy

Comfortably select from among overlapping objects, and choose the exact place where you want to paste your elements with the Paste and Place option. Open, load and utilize brush files to enhance your layouts. Resize, crop, rotate and correct your photos. And easily work with drop shadows, transparencies and text, to achieve your desired layout.



## Go ahead and play

Experiment with effects with peace of mind, knowing that your original image stays intact. With Dynamic Adjustments, you have the luxury of freedom. Quickly modify existing effects, switch their order for a different result, hide them, or delete them completely at any time. It's no strings attached creative control.



### Correct Photo Flaws

Correct your photos with powerful and fast-fix tools, including Red Eye, Dodge, Burn, Sharpen, and Smudge. Magically erase imperfections, blemishes, and unwanted objects with the Repair Tool. Try the Auto-adjustments feature for one-click Auto Color Balance, Auto Levels, Auto Sharpen, or Auto Contrast. Use Auto Fix to make all the necessary adjustments for you at once, or take full control of each adjustment using sliders.



### Stylize Photos

Easily add your creative flair to photos. Try a vignette to create polished portrait-style photos. Set your photos in motion with the Blur tools. Take your photos back in time with the sepia effect, or add a dash of drama with Photo Editor's comprehensive black and white mode.



### Edit in Batches

Save time by using the Batch Processor to edit groups of photos. Fix color, lighting and sharpness issues, or apply artistic effects, to everything all at once.



### Shape your shots

Create interesting effects by combining objects and photos. Punch out photos using an array of pre-defined shapes, or design your own custom shapes.

## Say More with Words

Add text to your photos, exactly the way you want. Change up the font and color of all of your text or just a single word or phrase. And why stick to straight text? Wrap your text inside a shape, or along a custom or preset text path to add some flow to your shot.



## Fast Track to Results

The Adjustments Palette gives you quick access to all the alterations you can apply to photos, objects, and text. It's your shortcut to the editing and creative functions you need the most.

## Work with Metadata

Adding and editing EXIF and IPTC information will not only help you keep track of the details, but will also provide excellent reference to aid you in recreating that perfect shot. For even more control over your metadata, consider a photo management tool, such as ACDSee or ACDSee Pro.

## System Requirements

### Hardware

- Intel Pentium 4-class or equivalent.
- 512 MB RAM (2 GB RAM recommended)
- 300 MB free hard disk space (1 GB recommended)
- 16-bit color or higher (True color recommended)
- 1024x768 or higher screen resolution recommended

### Software

- Microsoft® Windows® XP with Service Pack 3, Windows Vista®, Windows® 7, Windows® 8
- Microsoft Internet Explorer 7.0 or higher





 **EARN UP TO € 100\* CASHBACK** **Create and Save**  **CorelDRAW GRAPHICS SUITE 2019**  \*Terms and conditions apply. Payment in local currency [FIND OUT MORE](#)

 Zaky Mufthi



KESKITETYSTI



New Release  
**MAXQDA 2018**



KESKITETYSTI